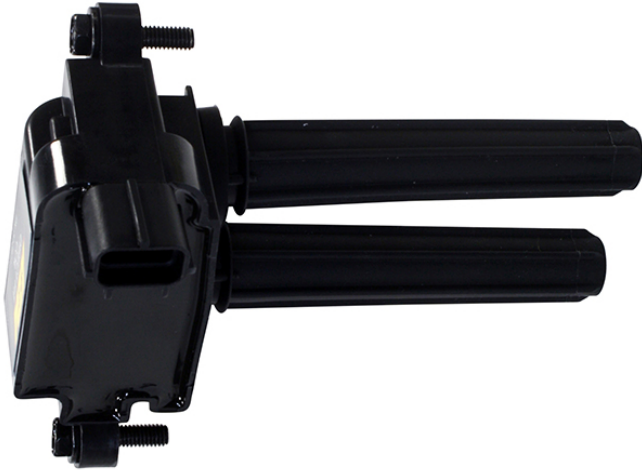


# Instruction Manual

30-2877, 30-2877-8



## AEM High Output Direct Fit Coils 2005-2014 Dodge Hemi 5.7/6.1L 30-2877, 30-2877-8



Volts	18	17	16	15	14	13	12	11	10	9	8
Max Dwell Time (ms)	1.25	1.36	1.44	1.54	1.65	1.81	2.02	2.34	2.78	3.54	5

The “Max Dwell Time” is the point where increasing the dwell further does not add any additional ignition energy but does add considerable heat to the coil. Even so, you should only run the “Max Dwell Time” when under optimum conditions and only when it is actually necessary, like when the engine is making near its peak torque output, since doing so still generates a significant amount of heat. Continuous operation at Max Dwell Time at high RPM without adequate cooling may damage the coil which could possibly lead to engine damage. Always use the minimum dwell time required to fire the cylinder and take caution with the possibility of overheating the coil or the coil driver unit if it is run at, or near, the max dwell time.

### Parts Included, PN **30-2877**

- 1x Coil
- User Instructions

### **30-2877-8**

- 8x Coils
- User Instructions

All coils with rubber boots include pre-applied dielectric grease.

### Installation:

1. Disconnect and isolate the negative battery cable.
2. Unlock the electrical connector by pressing on tab while pulling electrical connector from coil.
3. Remove two coil mounting bolts.
4. Carefully pull up coil from cylinder head opening with a slight twisting action. Twisting will help break loose boots from spark plugs.
5. Install AEM coil by positioning coil into valve cover and push both spark plug boots onto each spark plug.
6. Install coil mounting bolts and tighten to 12 Nm (106 in-lbs).
7. Connect electrical connector to coil and lock connector.
8. Connect negative battery cable.

### Limited Warranty

Advanced Engine Management Inc. warrants to the consumer that all AEM High Performance products will be free from defects in material and workmanship for a period of twelve (12) months from date of the original purchase. Products that fail within this 12-month warranty period will be repaired or replaced at AEM's option, when determined by AEM that the product failed due to defects in material or workmanship. This warranty is limited to the repair or replacement of the AEM part. In no event shall this warranty exceed the original purchase price of the AEM part nor shall AEM be responsible for special, incidental or consequential damages or cost incurred due to the failure of this product. Warranty claims to AEM must be transportation prepaid and accompanied with dated proof of purchase. This warranty applies only to the original purchaser of product and is non-transferable. All implied warranties shall be limited in duration to the said 12-month warranty period. Improper use or installation, accident, abuse, unauthorized repairs or alterations voids this warranty. AEM disclaims any liability for consequential damages due to breach of any written or implied warranty on all products manufactured by AEM. Warranty returns will only be accepted by AEM when accompanied by a valid Return Merchandise Authorization (RMA) number. Product must be received by AEM within 30 days of the date the RMA is issued. Please note that before AEM can issue an RMA for any electronic product, it is first necessary for the installer or end user to contact the EMS tech line at 1-800-423-0046 to discuss the problem. Most issues can be resolved over the phone. Under no circumstances should a system be returned or a RMA requested before the above process transpires. AEM will not be responsible for electronic products that are installed incorrectly, installed in a non-approved application, misused, or tampered with.