

# Instruction Manual



**INSTALLATION INSTRUCTIONS FOR  
EMS P/N 30-6050  
2000-2001 ACURA INTEGRA  
1998-1999 ACURA 2.3CL  
1998-2002 HONDA ACCORD  
1999-2000 HONDA CIVIC**

**STOP!  
THIS PRODUCT HAS LEGAL RESTRICTIONS.  
READ THIS BEFORE INSTALLING/USING!**

THIS PRODUCT MAY BE USED SOLELY ON VEHICLES USED IN SANCTIONED COMPETITION WHICH MAY NEVER BE USED UPON A PUBLIC ROAD OR HIGHWAY, UNLESS PERMITTED BY SPECIFIC REGULATORY EXEMPTION. (VISIT THE "EMISSIONS" PAGE AT [HTTP://WWW.SEMASAN.COM/EMISSIONS](http://www.semasan.com/EMISSIONS) FOR STATE BY STATE DETAILS.)

IT IS THE RESPONSIBILITY OF THE INSTALLER AND/OR USER OF THIS PRODUCT TO ENSURE THAT IT IS USED IN COMPLIANCE WITH ALL APPLICABLE LAWS AND REGULATIONS. IF THIS PRODUCT WAS PURCHASED IN ERROR, DO NOT INSTALL AND/OR USE IT. THE PURCHASER MUST ARRANGE TO RETURN THE PRODUCT FOR A FULL REFUND.

THIS POLICY ONLY APPLIES TO INSTALLERS AND/OR USERS WHO ARE LOCATED IN THE UNITED STATES; HOWEVER CUSTOMERS WHO RESIDE IN OTHER COUNTRIES SHOULD ACT IN ACCORDANCE WITH THEIR LOCAL LAWS AND REGULATIONS.

**WARNING:** This installation is not for the tuning novice! Use this system with **EXTREME** caution! The AEM EMS allows for total flexibility in engine tuning. Misuse or improper tuning of this product can destroy your engine! If you are not well versed in engine dynamics and the tuning of engine management systems **DO NOT** attempt the installation. Refer the installation to an AEM-trained tuning shop or call 800-423-0046 for technical assistance.

**NOTE:** All supplied AEM calibrations, Wizards and other tuning information are offered as potential starting points only. IT IS THE RESPONSIBILITY OF THE ENGINE TUNER TO ULTIMATELY CONFIRM IF THE CALIBRATION IS SAFE FOR ITS INTENDED USE. AEM holds no responsibility for any engine damage that results from the misuse or mistuning of this product!

Thank you for purchasing an AEM Engine Management System.

The AEM Engine Management System (EMS) is the result of extensive development on a wide variety of cars. Each system is engineered for the particular application. The AEM EMS differs from all others in several ways. The EMS is a stand alone system, which completely replaces the factory ECU and features unique Plug and Play Technology, which means that each system is configured especially for your make and model of car without any jumper harnesses. There is no need to modify your factory wiring harness and in most cases your car may be returned to stock in a matter of minutes.

For stock and slightly modified vehicles, the supplied startup calibrations are configured to work with OEM sensors, providing a solid starting point for beginner tuning. For more heavily modified cars, the EMS can be reconfigured to utilize aftermarket sensors and has many spare inputs and outputs allowing the elimination of add-on rev-limiters, boost controllers, nitrous controllers, fuel computers, etc. It also includes a configurable onboard 1MB data logger that can record any 16 EMS parameters at up to 250 samples per second. Every EMS comes with all functions installed and activated; there is no need to purchase options or upgrades to unlock the full potential of your unit.

The installation of the AEM EMS on the supported vehicles uses the stock sensors and actuators. After installing the AEMTuner software, the startup calibration will be saved to the following folder on your PC:

*C:\Program Files\AEM\AEMTuner\Calibrations\Honda-Acura\*

Multiple calibrations may be supplied for each EMS; additional details of the test vehicle used to generate each calibration can be found in the Calibration Notes section for that file.

Please visit the AEM Performance Electronics Forum at <http://www.aempower.com> and register. We always post the most current strategy release, PC Software and startup calibrations online. On the forum, you can find and share many helpful hints/tips to make your EMS perform its best.

### **TUNING NOTES AND WARNING:**

While the supplied startup calibration may be a good starting point and can save considerable time and money, it will not replace the need to tune the EMS for your specific application. AEM startup calibrations are not intended to be driven aggressively before tuning. We strongly recommend that every EMS be tuned by someone who is already familiar with the AEM software and has successfully tuned vehicles using an AEM EMS. Most people make mistakes as part of the learning process; be warned that using your vehicle as a learning platform can damage your engine, your vehicle, and your EMS.

Read and understand these instructions **BEFORE** attempting to install this product.

### 1) Install AEMTuner software onto your PC

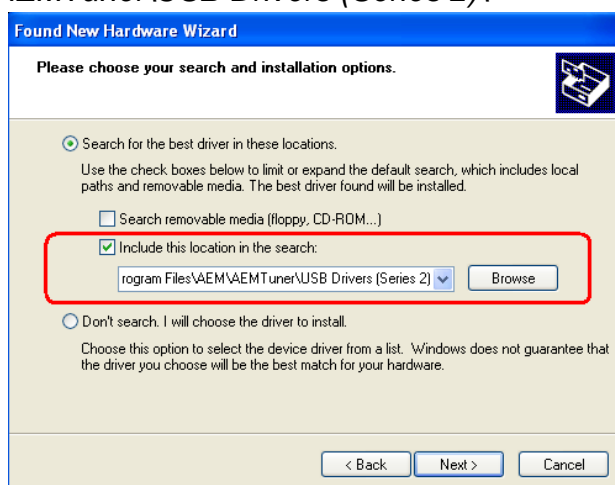
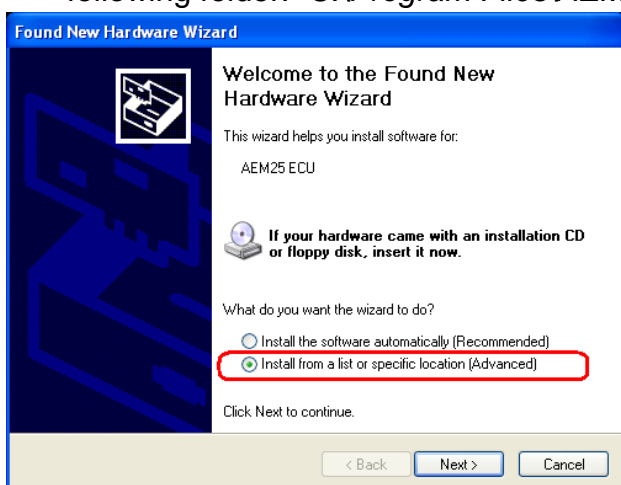
The latest version of the AEMTuner software can be downloaded from the AEMTuner section of the AEM Performance Electronics forums. Series 2 units are not well supported by the older AEMPro tuning software.

### 2) Remove the Stock Engine Control Unit

- Access the stock Engine Control Unit (ECU). The location of the ECU on the OBD2 Hondas is behind the passenger side kick panel.
- Carefully disconnect the wiring harness from the ECU. Avoid excessive stress or pulling on the wires, as this may damage the wiring harness. Some factory ECUs use a bolt to retain the factory connectors, and it must be removed before the harness can be disconnected. There may be more than one connector, and they must all be removed without damage to work properly with the AEM ECU. Do not cut any of the wires in the factory wiring harness to remove them.
- Remove the fasteners securing the ECU to the car body, and set them aside. Do not destroy or discard the factory ECU, as it can be reinstalled easily for street use and troubleshooting.

### 3) Install the AEM Engine Management System

- Plug the factory wiring harness into the AEM EMS and position it so the wires are not pulled tight or stressed in any manner. Secure the EMS with the provided Velcro fasteners.
- Plug the comms cable into the EMS and into your PC.
- Turn the ignition on but do not attempt to start the engine.
- The USB drivers must be installed the first time you connect to a Series 2 EMS with an onboard USB port. When the Series 2 EMS is connected to the PC's USB port and receiving power from the vehicle, the "Found New Hardware" window will appear. Select "Install from a list of specific location (Advanced)" and browse to the following folder: *C:\Program Files\AEM\AEMTuner\USB Drivers (Series 2)\*



- With the AEMTuner software open, select **ECU>>Upload Calibration** to upload the startup calibration file (.cal) that most closely matches the vehicle's configuration to be tuned. Check the Notes section of the calibration for more info about the vehicle it was configured for. These files can be found in the following folder: *C:\Program Files\AEM\AEMTuner\Calibrations\Honda-Acura\*

- f) Set the throttle range: Select Wizards>>Set Throttle Range and follow the on-screen instructions. When finished, check that the 'Throttle' channel never indicates less than 0.2% or greater than 99.8%, this is considered a sensor error and may cause some functions including idle feedback and acceleration fuel to operate incorrectly.

#### 4) Ready to begin tuning the vehicle.

- a) Before starting the engine, verify that the fuel pump runs for a couple of seconds when the key is turned on and there is sufficient pressure at the fuel rail. If a MAP sensor is installed, check that the Engine Load indicates something near atmospheric pressure (approximately 101kPa or 0 PSI at sea level) with the key on and engine off. Press the throttle and verify that the 'Throttle' channel responds but the Engine Load channel continues to measure atmospheric pressure correctly.
- b) Start the engine and make whatever adjustments may be needed to sustain a safe and reasonably smooth idle. Verify the ignition timing: Select **Wizards>>Ignition Timing Sync** from the pull-down menu. Click the '*Lock Ignition Timing*' checkbox and set the timing to a safe and convenient value (for instance, 10 degrees BTDC). Use a timing light and compare the physical timing numbers to the timing value you selected. Use the *Sync Adjustment Increase/Decrease* buttons to make the physical reading match the timing number you selected.
- c) Note: This calibration needs to be properly tuned before driving the vehicle. It is intended for racing vehicles and may not operate smoothly at idle or part-throttle.  
**NEVER TUNE THE VEHICLE WHILE DRIVING**

#### 5) Troubleshooting an engine that will not start

- a) Double-check all the basics first... engines need air, fuel, compression, and a correctly-timed spark event. If any of these are lacking, we suggest checking simple things first. Depending on the symptoms, it may be best to inspect fuses, sufficient battery voltage, properly mated wiring connectors, spark using a timing light or by removing the spark plug, wiring continuity tests, measure ECU pinout voltages, replace recently-added or untested components with known-good spares. Check that all EMS sensor inputs measure realistic temperature and/or pressure values.
- b) If the EMS is not firing the coils or injectors at all, open the Start tab and look for the 'Stat Sync'd' channel to turn ON when cranking. This indicates that the EMS has detected the expected cam and crank signals; if Stat Sync'd does not turn on, monitor the Crank Tooth Period and T2PER channels which indicate the time between pulses on the Crank and T2 (Cam) signals. Both of these channels should respond when the engine is cranking, if either signal is not being detected or measuring an incorrect number of pulses per engine cycle the EMS will not fire the coils or injectors.
- c) If the Engine Load changes when the throttle is pressed this usually indicates that there is a problem with the MAP sensor wiring or software calibration (when the EMS detects that the MAP Volts are above or below the min/max limits it will run in a failsafe mode using the TPS-to-Load table to generate an artificial Engine Load signal using the Throttle input). This may allow the engine to sputter or start but not continue running properly.

# Application Notes for EMS P/N 30-6050

## 00-01 Integra, 98-02 Accord, 99-00 Civic

Make:	Acura/Honda
Model:	Various, see list above
Years Covered:	Various, see list above
Engine Displacement:	1.6L - 2.3L
Engine Configuration:	Inline 4
Firing Order:	1-3-4-2
N/A, S/C or T/C:	N/A
Load Sensor Type:	MAP
Map Min:	0.32V @ -13.9 PSI
Map Max:	4.84V @ 10.94 PSI
# Coils:	1
EMS Ignition driver type:	5-0V, Rising Edge trigger
# Injectors:	4
Factory Injectors:	190-290cc/min Saturated
Factory Inj Resistors:	No
Injection Mode:	Sequential
Knock Sensors used:	1
Lambda Sensors used:	2 (aftermarket wideband: factory O2 not supported)
Idle Motor Type:	Duty-controlled Solenoid (Rotary for D16Y7)
Main Relay Control:	No
Crank Pickup Type:	Magnetic (2-wire)
Crank Teeth/Cycle:	24
Cam Pickup Type:	Magnetic (2-wire)
Cam Teeth/Cycle:	1
Transmissions Offered:	M/T, A/T
Trans Supported:	M/T Only
Drive Options:	FWD
Supplied Connectors:	Plug D with spare pins
Plug-N-Pin kit:	AEM part# 35-2610 (includes plugs A-D, pins)

Spare Injector Drivers:	Inj 5, Pin D1
Spare Injector Drivers:	Inj 6, Pin B19
Spare Injector Drivers:	Inj 7, Pin D2
Spare Injector Drivers:	Inj 8, Pin B16
Spare Injector Drivers:	Inj 9, Pin A12/A13
Spare Injector Drivers:	Inj 10, Pin C11
Spare Injector Drivers:	Inj 11, Pin A14
Spare Injector Drivers:	Inj 12, Pin A10
Spare Coil Drivers:	Coil 2, Pin C12
Spare Coil Drivers:	Coil 3, Pin C13
Spare Coil Drivers:	Coil 4, Pin C14
Spare Coil Drivers:	Coil 7, Pin A13 **
Spare Coil Drivers:	Coil 8, Pin A22 **
Boost Solenoid:	PW 2, Pin D16
EGT #1 Location:	Pin A5
EGT #2 Location:	Pin D7
EGT #3 Location:	Pin A30
EGT #4 Location:	Pin C5
Spare 0-5V Channels:	ADCR03, Pin A29
Spare 0-5V Channels:	ADCR11, Pin C6
Spare 0-5V Channels:	ADCR13, Pin C24
Spare 0-5V Channels:	ADCR14, Pin D8
Spare Low Side Driver:	Low Side 1, Pin A2
Spare Low Side Driver:	Idle 2, Pin A28
Spare Low Side Driver:	Idle 4, Pin D5
Spare Low Side Driver:	Idle 6, Pin B17
Spare Low Side Driver:	Idle 8, Pin B25
Spare Low Side Driver:	---
Check Engine Light:	Low Side 10, Pin A18
Spare High Side Driver:	High Side 2, Pin B7
Spare High Side Driver:	High Side 4, Pin D4
Spare High Side Driver:	---
Spare Switch Input:	Switch 1, Pin A32
Spare Switch Input:	Switch 2, Pin D11
Spare Switch Input:	Switch 3, Pin D12
Spare Switch Input:	Switch 5, Pin A26

**WARNING:** \*\*The Coil7 and Coil 8 outputs are intended only for use with ignitors (or smart coils with built-in ignitors). Do not connect these pins directly to 2-wire direct-fire ignition coils (a.k.a. 'dumb' coils); doing so will damage your EMS and void your warranty.

All switch input pins must connect to ground, the switch should not provide 12V power to the EMS because that will not be detected as on or off. Connecting 12V power to the switch input pins may damage your EMS and void your warranty.

The function of the following pins have been changed from the original 30-1050 EMS, please see pinout chart for more info:  
A1, A10, A11, A13, A14, A22, B24, D10, D14, D15

### **EMS Fuel Map, Boost Fuel Trim Table**

The 30-6100 maps provided utilize the “*Boost Fuel Trim Table*” to provide a 1:1 fuel compensation above and below atmospheric pressure. In the startup calibration, the “*Boost Fuel TrimTable*” is configured to provide twice as much fuel when the manifold pressure is twice as high and half the fuel when the manifold pressure is half as high; this should help simplify the tuning process for different vacuum and boost levels. Notice the values in the main “*Fuel Map*” do not change above 100 kPa (0 psi boost), the fuel correction is being made by the “*Boost Fuel Trim Table*.” Note: the “*Boost Fuel Trim Table*” must be adjusted if a different MAP sensor is installed or if the Load breakpoints are adjusted. The Boost Fuel Correct value should be set to -90 at 10kPa, 0 at 100 kPa, +100 at 200 kPa, +200 at 300 kPa, etc...

### **S2000 Engine Coolant Temperature Gauge (ECT) Functionality**

For customers interested in using the Honda S2000 gauge cluster, please note that the 30-6050 EMS is configured to drive the factory S2000 ECT gauge by sending the appropriate signal on pin A1. This signal is calibrated to use the OEM Honda S2000 engine coolant sensor and may not be accurate if used with OEM coolant sensors from the Civic or Integra.

### **Solution for distributed ignition ‘kick back’ when cranking:**

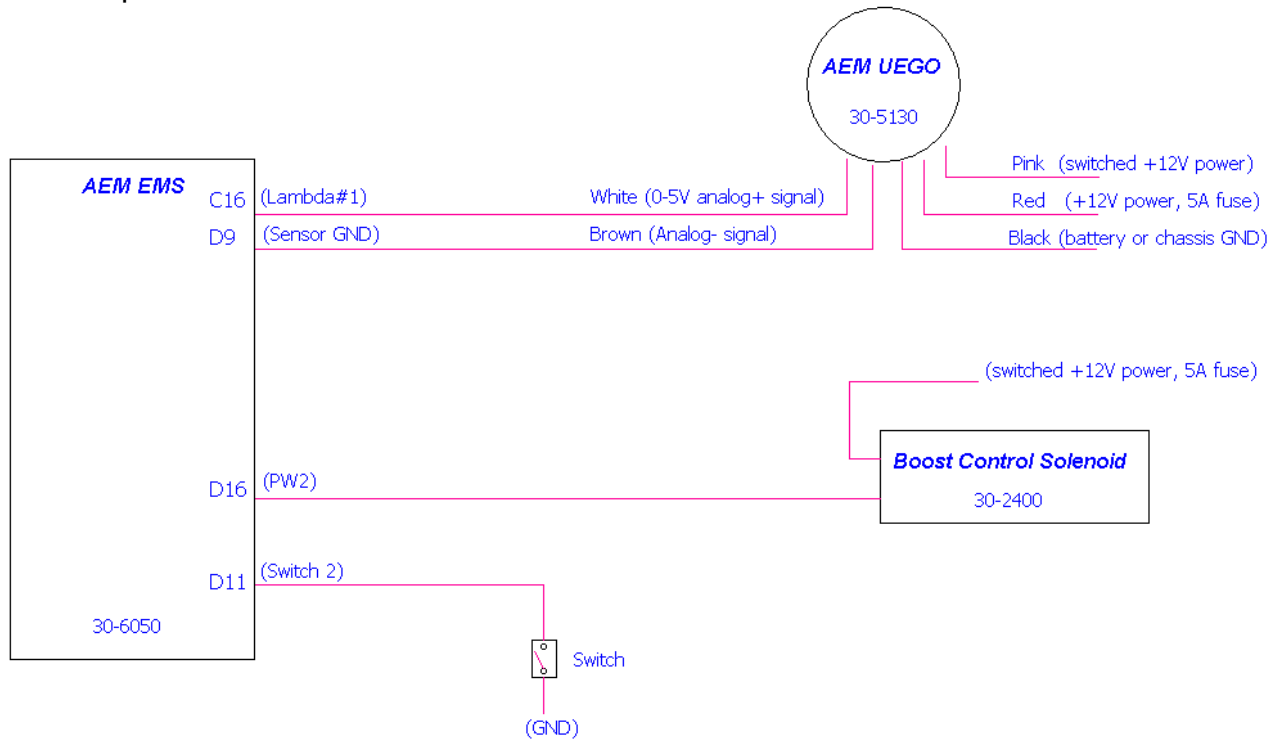
With the Series 1 EMS, some vehicles would experience erratic ignition timing at low RPM. The most noticeable symptom would be an engine that ‘kicks back’ when cranking, and in some cases the EMS would count timing errors or lose ‘Stat Sync’ at low engine speeds.

These problems have been eliminated by adjusting calibration settings in Series 2 Honda EMS startup calibrations, but could be re-introduced by converting Series 1 calibrations or copying values from Series 1 calibrations. If users wish to convert old Series 1 calibrations for use with the new Series 2 EMS, please ensure that the following options and tables match the Series 2 startup calibration:

*Crank H Sens Below, Crank L Sens Above, Cam(T2) H Sens Below,  
Cam(T2) L Sens Above, Coil Dwell Factor, Dwell Max, Dwell Min,  
Dwell vs RPM (table), Dwell vs Batt Volts (table)*

**Wiring accessories to the EMS:**

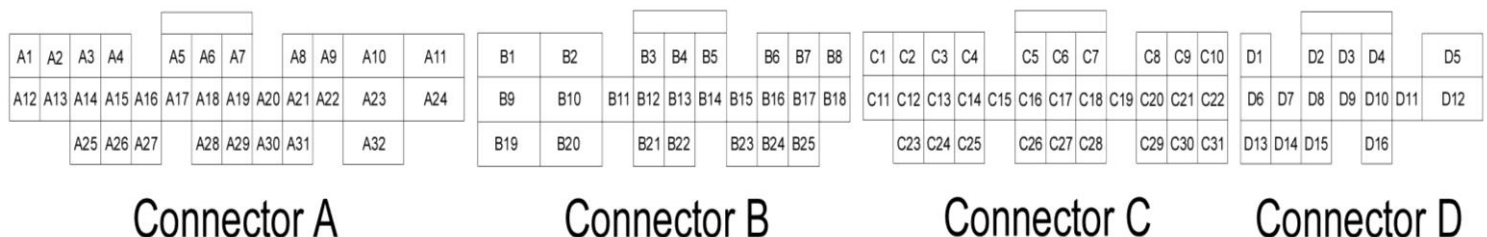
Please follow this suggested wiring diagram when adding accessories such as UEGO gauges, Boost Control solenoids, or switches for use with the EMS. Note that wire polarity is not important for the Boost Control Solenoid.



## Connection Diagram for EMS P/N 30-6050 00-01 Integra, 98-02 Accord, 99-00 Civic

Pin #	00-01 Integra / 98-02 Accord / 99-00 Civic	AEM EMS 30-6050	I/O	Availability
A1	---	Coolant dash signal	Output	Dedicated, for use with S2000 dash
A2	---	Low Side Driver 1	Output	Avail, Switched Ground, 1.5A Max
A3	EVAP Bypass Solenoid Valve	Low Side Driver 3	Output	PnP For Bypass Solenoid
A4	EVAP Control Canister Vent	Low Side Driver 5	Output	PnP For Control Canister Vent
A5	---	EGT 1	Input	Avail, jumper set for 0-5V Input
A6	EVAP Purge Control Solenoid	Low Side Driver 4	Output	PnP For EVAP Purge Control
A7	---	Sensor Ground	Output	Avail, Sensor Ground
A8	Secondary O2 Heater Control	Low Side Driver 12	Output	Avail, Switched Ground, 1.5A Max
A9	---	T3 (Vehicle Speed)	Input	**This pin connects to C23 also**
A10	Service Check Signal	Injector 12	Output	Avail, Switched Ground, 1.5A Max
A11	---	PW3	Output	Avail, Switched Ground, 1.5A Max
A12	---	Injector 9	Output	Avail, Switched Ground, 1.5A Max
A13	---	Coil 7	Output	Avail, 0/5V falling edge signal
A14	---	Injector 11	Output	Avail, Switched Ground, 1.5A Max
A15	---	Low Side Driver 11	Output	**This pin connects to A16 also**
A16	Fuel Pump Relay	Low Side Driver 11	Output	PnP For Fuel Pump
A17	A/C Clutch Relay	Low Side Driver 6	Output	PnP For A/C Clutch
A18	Malfunction Indicator Light	Low Side Driver 10	Output	PnP For MIL
A19	Engine Speed Pulse	Tach Output (LS7)	Output	PnP For Tach
A20	Radiator Fan Control	Low Side Driver 8	Output	PnP For Rad Fan Control
A21	K-Line	+12V Switched	Output	Dedicated, filtered 12V power
A22	---	Coil 8	Output	Avail, 0/5V falling edge signal
A23	Secondary O2 Sensor	Lambda #2	Input	PnP For Lambda 32
A24	Starter Switch Signal	Cranking	Input	PnP For Starter Switch
A25	---	Idle #3	Output	Avail, Switched Ground, 1.5A Max
A26	P/S Pressure Switch	Switch 5	Input	Avail, Switch must connect to ground
A27	A/C Switch Signal	Switch 6	Input	PnP For A/C Request
A28	---	Idle #2	Output	Avail, Switched +12v, 1.5A Max
A29	Fuel Tank Pressure Sensor	MAF	Input	Avail, 0-5V Input
A30	Electrical Load Detector	EGT #3	Input	Avail, jumper set for 0-5V Input
A31	---	Sensor Ground	Output	Avail, Sensor Ground
A32	Brake Switch Signal	Switch 1	Input	Avail, Switched Input

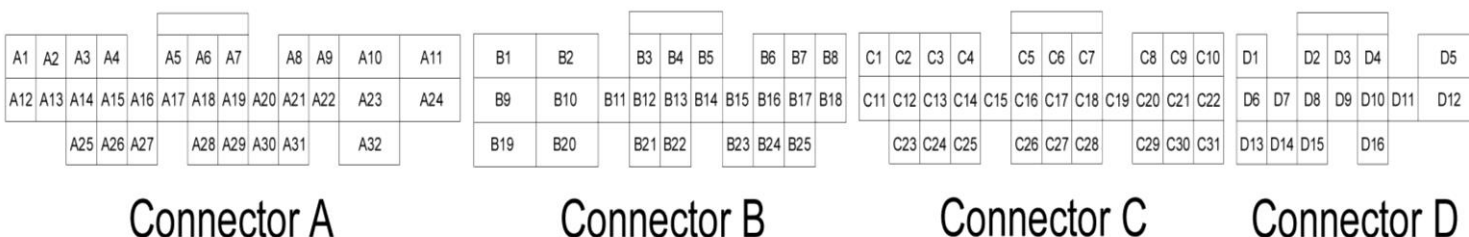
**\*\*\* Important: Wire View of AEM EMS. Reference diagram below for pin location. \*\*\***





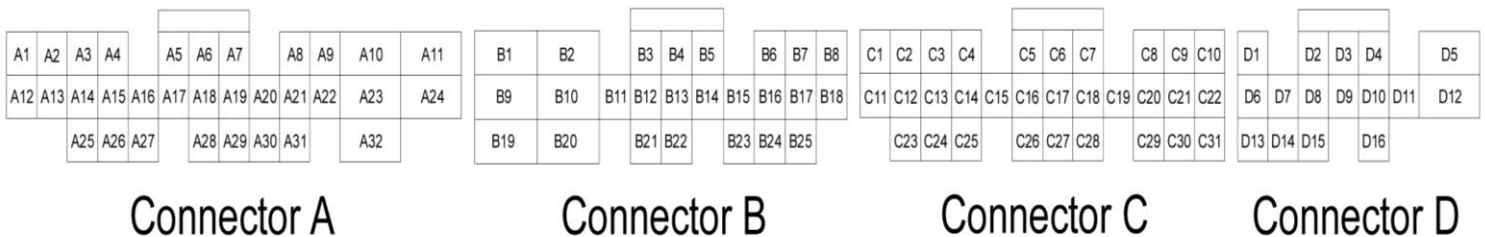
Pin #	00-01 Integra / 98-02 Accord / 99-00 Civic	AEM EMS 30-6050	I/O	Availability
B1	Power Source 1	+12V Switched	Both	Dedicated
B2	Power Ground 1	Power Ground	Both	Dedicated
B3	Injector 2	Injector 2	Output	PnP For Injector 2
B4	Injector 3	Injector 3	Output	PnP For Injector 3
B5	Injector 4	Injector 4	Output	PnP For Injector 4
B6	Idle Air Control Valve +	PW 1i	Output	PnP For Idle Control Solenoid
B7	---	High Side Driver 2	Output	Avail, Switched +12v, 1.5A Max
B8	---	Idle #5	Output	Avail, Switched Ground, 1.5A Max
B9	Power Source 2	+12V Switched	Both	Dedicated
B10	Power Ground 2	Power Ground	Both	Dedicated
B11	Injector 1	Injector 1	Output	PnP For Injector 1
B12	VTEC solenoid Valve	High Side Driver 1	Output	PnP For VTEC Solenoid
B13	Ignition Control Module	Coil 1	Output	PnP Coil 1, Rising Edge trigger
B14	---	---	---	Not Used
B15	Idle Air Control Valve -	PW1	Output	PnP For Idle Control Solenoid
B16	Intake Air Bypass Solenoid	Injector 8	Output	PnP For IAB Solenoid
B17	---	Idle #6	Output	Avail, Switched +12v, 1.5A Max
B18	---	Idle #7	Output	Avail, Switched Ground, 1.5A Max
B19	---	Injector 6	Output	Avail, Switched Ground, 1.5A Max
B20	Logic Ground 1	Power Ground	Both	Dedicated
B21	Voltage Back Up	Permanent +12V	Input	PnP For Perm Power
B22	Logic Ground 2	Power Ground	Both	Dedicated
B23	Idle Air Control Valve	PW1	Output	PnP For Idle Control Motor
B24	---	Knock 2	Input	Available, software knock filter
B25	---	Idle #8	Output	Avail, Switched +12v, 1.5A Max

\*\*\* Important: Wire View of AEM EMS. Reference diagram below for pin location. \*\*\*



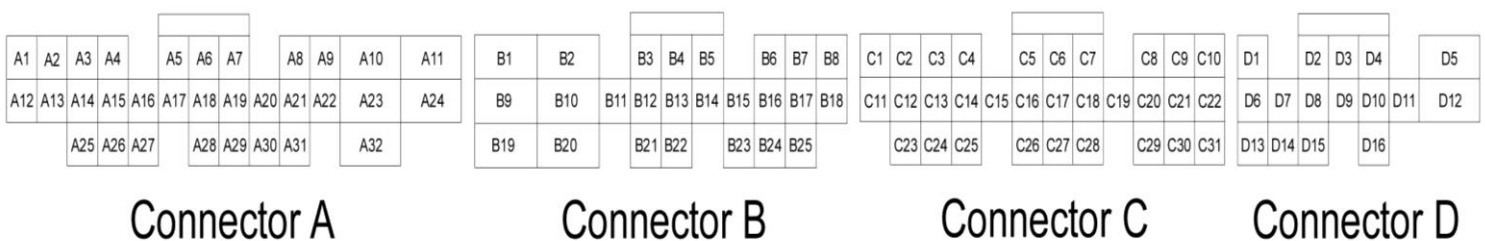
Pin #	00-01 Integra / 98-02 Accord / 99-00 Civic	AEM EMS 30-6050	I/O	Availability
C1	Primary O2 Heater Control	Low Side Driver 2	Output	Avail, Switched Ground, 1.5A Max
C2	Alternator Control	---	---	Not Used
C3	Knock Sensor 1	Knock 1	Input	PnP For Knock 1
C4	---	Coil 1	Output	**This pin connects to B13 also**
C5	Alternator FR Signal	EGT #4	Input	Avail, jumper set for 0-5V Input
C6	---	ADCR11	Input	Available, 0-5V in
C7	Sensor Ground 1	Sensor Ground	Output	Dedicated, Sensors only
C8	CKP +	Crank Sensor	Input	PnP For Crank Sensor
C9	CKP -	Timing Ground	Output	PnP For Timing Ground
C10	VTEC Pressure Switch Signal	Switch 4	Input	PnP For VTEC Oil Press Sw
C11	---	Injector 10	Output	Avail, Switched Ground, 1.5A Max
C12	---	Coil 2	Output	Avail, Coil Output
C13	---	Coil 3	Output	Avail, Coil Output
C14	---	Coil 4	Output	Avail, Coil Output
C15	---	Lambda 2	Input	Avail, 0-5v Lambda 2 input
C16	Primary O2 Sensor	Lambda 1	Input	Avail, 0-5v Lambda 1 input
C17	MAP Sensor	MAP	Input	PnP For 0-5v MAP Sensor
C18	Sensor Ground 2	Sensor Ground	Output	Dedicated, Sensors only
C19	Sensor Voltage 1	+5V Sensor	Output	Dedicated, Sensors only
C20	TDC +	T4 (Spare Speed)	Input	Avail, Speed Input
C21	TDC -	Timing Ground	Output	Avail, Speed Ground
C22	Crank Fluctuation Sensor	Knock #2	Input	Avail, Knock Sensor
C23	Vehicle Speed Sensor	T3 (Vehicle Speed)	Input	PnP Vehicle Speed Sensor
C24	---	ADCR13	Input	Available, 0-5V in, 100k pull up to 5v
C25	Intake Air Temp Sensor	AIT	Input	PnP AIT Sensor
C26	Engine Coolant Temp Sensor	Coolant	Input	PnP ECT Sensor
C27	Throttle Position Sensor	TPS	Input	PnP TPS Sensor
C28	Sensor Voltage 2	+5V Sensor	Output	PnP Sensor Vcc
C29	CYP +	Cam	Input	Dedicated, Cam Sensor
C30	CYP -	Timing Ground	Output	Dedicated
C31	Timing Ground	Timing Ground	Output	Dedicated

\*\*\* Important: Wire View of AEM EMS. Reference diagram below for pin location. \*\*\*



Pin #	00-01 Integra / 98-02 Accord / 99-00 Civic	AEM EMS 30-6050	I/O	Availability
D1	---	Injector 5	Output	Avail, Switched Ground, 1.5A Max
D2	---	Injector 7	Output	Avail, Switched Ground, 1.5A Max
D3	---	Idle #1	Output	Avail, Switched Ground, 1.5A Max
D4	---	High Side Driver 4	Output	Avail, Switched +12v, 1.5A Max
D5	---	Idle #4	Output	Avail, Switched +12v, 1.5A Max
D6	---	+5V Sensor	Output	Avail, 5V sensor reference power
D7	---	EGT #2	Input	Avail, jumper set for 0-5V Input
D8	---	ADCR14	Input	Available, 0-5V in, 100k pull up to 5v
D9	---	Sensor Ground	Output	Avail, Sensor Ground
D10	---	CAN1H	---	Dedicated
D11	---	Switch 2	Input	Avail, Switched GND Input
D12	---	Switch 3	Input	Avail, Switched GND Input
D13	---	High Side Driver 3	Output	Avail, Switched +12v, 1.5A Max
D14	---	CAN1L	---	Dedicated
D15	---	Baro Volts	---	Avail, 0-5V input
D16	---	PW 2	Output	Avail, Boost Solenoid Output

\*\*\* Important: Wire View of AEM EMS. Reference diagram below for pin location. \*\*\*



**30-1050 (Series 1) vs 30-6050 (Series 2) OBD2B Honda EMS pin differences:**

The EMS functions assigned to certain pins have been changed and no longer match the 30-1050 EMS. Unless otherwise noted, the following pins and functions will need to be manually reconfigured after using AEMTuner to convert a V1.19 (30-1050, Series 1 EMS) calibration for use with the 30-6050 Series 2 hardware.

Pin	OBD2B Honda	30-1050 function	30-6050 function	Notes
A1	---	Coil #5	Coolant dash sig	Coil 5 not available
A10	Service Check Signal	Injector #10i	Injector 12	Inj12 controlled independently of Inj10
A11	---	PW #2i	PW 3	PW3 controlled independently of PW2
A13	---	Injector #9i	Coil 7	Use A14 for injector output (INJ 11)
A14	---	FM	Injector 11	FM not available
A22	---	Low Side #9	Coil 8	Low Side 9 not available
B24	---	---	Knock 2	
D10	---	---	CAN1H	
D14	---	---	CAH1L	

## **AEM Electronics Warranty**

Advanced Engine Management Inc. warrants to the consumer that all AEM Electronics products will be free from defects in material and workmanship for a period of twelve months from date of the original purchase. Products that fail within this 12-month warranty period will be repaired or replaced when determined by AEM that the product failed due to defects in material or workmanship. This warranty is limited to the repair or replacement of the AEM part. In no event shall this warranty exceed the original purchase price of the AEM part nor shall AEM be responsible for special, incidental or consequential damages or cost incurred due to the failure of this product. Warranty claims to AEM must be transportation prepaid and accompanied with dated proof of purchase. This warranty applies only to the original purchaser of product and is non-transferable. All implied warranties shall be limited in duration to the said 12-month warranty period. Improper use or installation, accident, abuse, unauthorized repairs or alterations voids this warranty. AEM disclaims any liability for consequential damages due to breach of any written or implied warranty on all products manufactured by AEM. Warranty returns will only be accepted by AEM when accompanied by a valid Return Merchandise Authorization (RMA) number. Product must be received by AEM within 30 days of the date the RMA is issued.

Please note that before AEM can issue an RMA for any electronic product, it is first necessary for the installer or end user to contact the tech line at 1-800-423-0046 to discuss the problem. Most issues can be resolved over the phone. Under no circumstances should a system be returned or a RMA requested before the above process transpires.

AEM will not be responsible for electronic products that are installed incorrectly, installed in a non approved application, misused, or tampered with.

Any AEM electronics product can be returned for repair if it is out of the warranty period. There is a minimum charge of \$50.00 for inspection and diagnosis of AEM electronic parts. Parts used in the repair of AEM electronic components will be extra. AEM will provide an estimate of repairs and receive written or electronic authorization before repairs are made to the product.